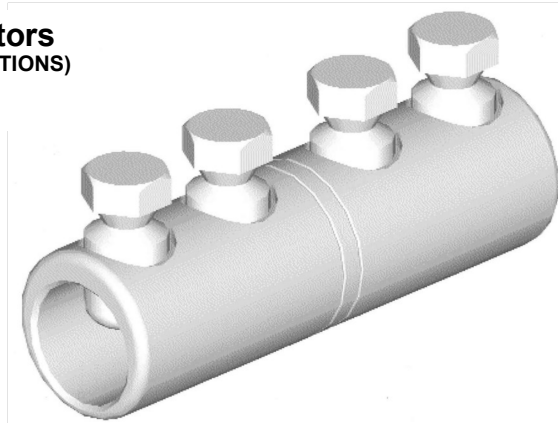


Straight mechanical ferrule with moisture / contaminant block

MECHANICAL CONNECTORS

MF15/.../SH Connectors (WAVEFORM POLE TERMINATIONS)



Principle Application:

For the connection of solid sector shaped cores to ABC stranded circular cores.

Range:

Connector Reference (Part Number)	Core C.S.A. (mm ²)					
	Circular Stranded ABC		Waveform Solid			
			3 Core		4 Core	
	Min	Max	Min	Max	Min	Max
MF15/1/SH	70	95	70	95	70	95
MF15/2/SH	70	95	120	150	120	185
MF15/3/SH	70	95	120	185	120	185
MF15/4/SH	95	120	240	300	240	300
MF15/5/SH	50	120	95	240	95	240

Note: For jointing other core configurations/sizes please contact Sicame Engineering Department

The MF15/SH range of single shear head mechanical connectors incorporate an integral moisture/contaminant block and comes complete with core stripping guides.

MF15/.../SH/T Connectors (TINNED)

Principle Application:

For the connection of copper neutrals to ABC conductor core.

Range:

Connector Reference	Core C.S.A. (mm ²)			
	Circular Stranded ABC		Waveform CNE's	
	Min	Max	Min	Max
MF15/1/SH/T (51803-49)	70	95	43	60
MF15/2/SH/T (3395-564)	70	95	75	115
MF15/3/SH/T	70	95	77	115

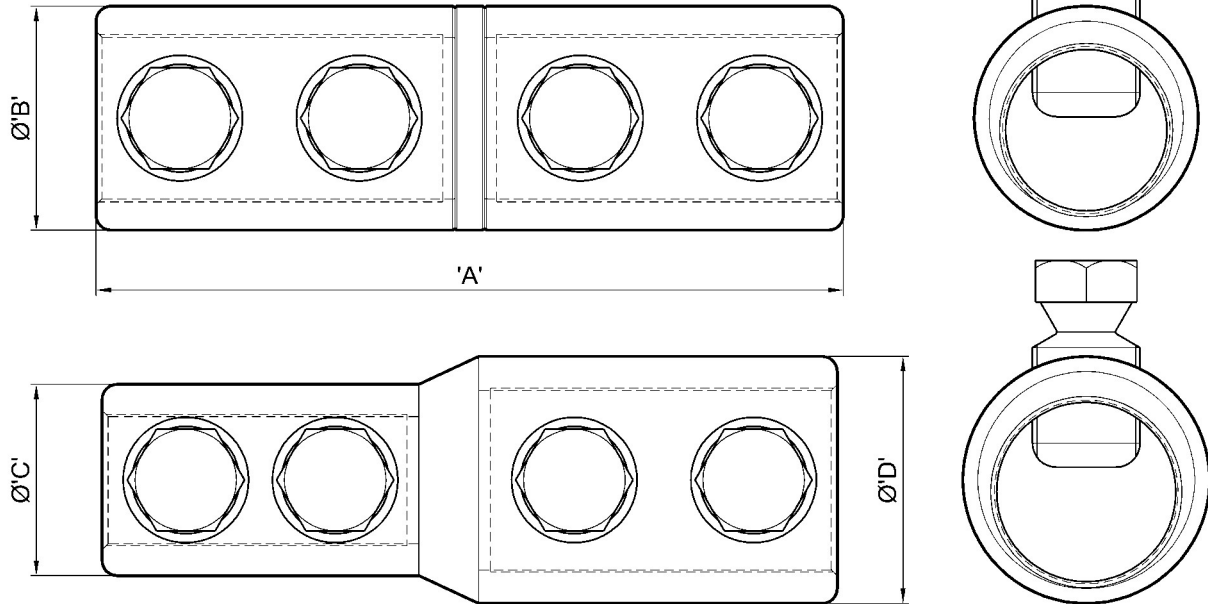
Note: For jointing other core configurations/sizes please contact Sicame Engineering Department

Straight mechanical
ferrule with moisture /
contaminant block

MECHANICAL CONNECTORS

MF15/.../SH Connectors

Physical Dimensions



Connector Reference	Dimensions (mm)				
	'A'	Ø'B'	Ø'C'	Ø'D'	'E' A/F
MF15/1/SH	107.0	28.0	N/A	N/A	17.0
MF15/2/SH	111.0	32.0	N/A	N/A	17.0
MF15/3/SH	125.0	37.5	N/A	N/A	17.0
MF15/4/SH	123.0	N/A	32.0	41.3	17.0
MF15/5/SH	119.0	N/A	32.0	37.5	17.0

Material:

Aluminium Alloy

Test Specification:

Engineering Recommendation C79 / IEC 1238-1.

Fitting instructions:

1. Strip insulation from each core equal to the depth of the bore guide + 5mm.
2. Thoroughly abrade exposed conductor cores. (See note).
3. Position the conductor cores within the connector ensuring they are fully located.
4. Fit the shear bolts and tighten consecutively one turn at a time until the bolts have sheared.

Note: When jointing copper conductor, wrap the core with the brass gauze supplied prior to installation.

©COPYRIGHT

Sicame UK Ltd operates a continuous product design development and improvement programme and offers active co-operation establishing satisfactory procedures and systems to meet new or unusual jointing situations. The company reserves the right to introduce modifications to the above designs and specifications without prior notice.

sicame
UK

2.14b

FEBRUARY 2020