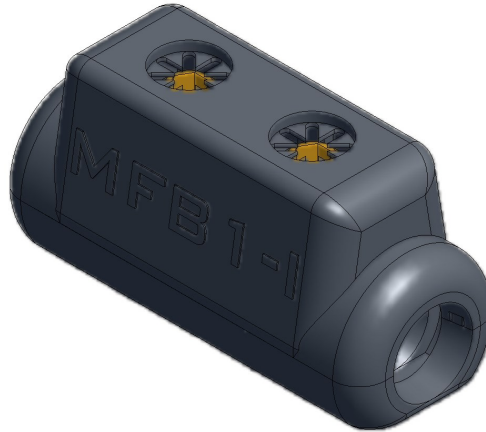


Straight Mechanical
Ferrule - Fully Insulated

MECHANICAL CONNECTORS

MFB1/I & 2/I Connector



Principle Application:

Stranded service conductors.

Range:

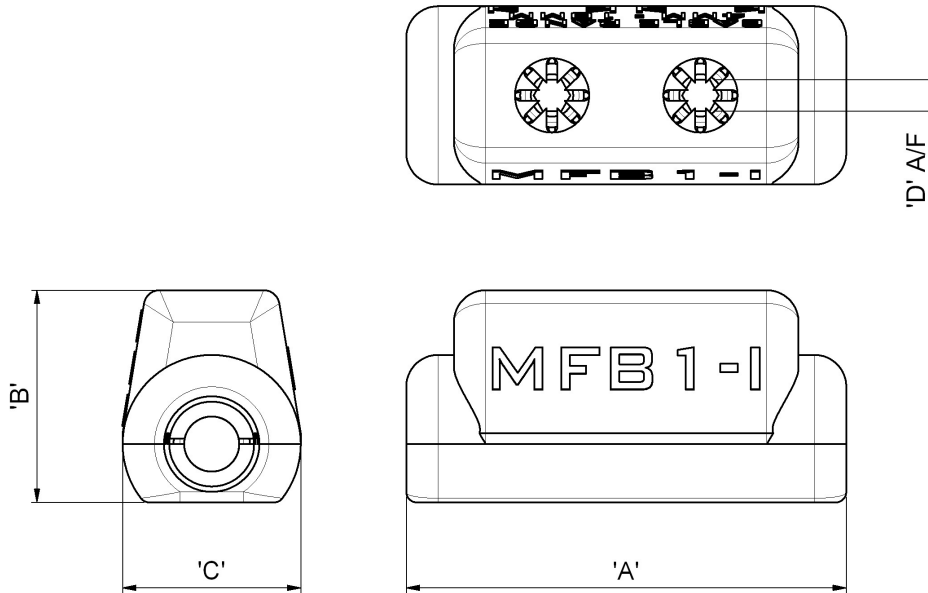
Product Reference (Part Number)	Type	Core C.S.A. (mm ²)	
		Min	Max
MFB1/I (2466-286)	Blocked	1.5*	6*
MFB2/I (51801-80)	Straight Through	1.5*	6*

Note: For jointing alternative core configurations/sizes please contact Sicame Engineering Dept

The **Sicame MFB1/I and MFB2/I** mechanical connector is designed for straight connections on stranded service cables. The brass connector yoke and grub screws make it suitable for jointing copper circular shaped conductors.

It has a factory fitted polypropylene shroud to fully insulate the assembled connector.

MFB1/I & 2/I Connector



Product Reference (Part Number)	Dimensions (mm)			
	'A'	'B'	'C'	'D' A/F
MFB1/I (2466-286)	41.5	20	16.8	3
MFB2/I (51801-80)	41.5	20	16.8	3

Material:

Body: Brass
Screws: Brass
Shroud: Polypropylene

Test Specification:

Designed to meet the requirements of BS EN 61238-1 Class B.

Fitting Instructions:

1. Cut the cables to length and strip the core insulation.
2. Thoroughly abrade all conductors to be jointed.
3. Place the cable core into the connector bore to the centre and torque tighten the grub screws until tight using appropriate tooling.
- 4.

Note:

*Conductor cores below 6mm² should be doubled, and if necessary doubled again, to achieve the necessary cross-sectional area.